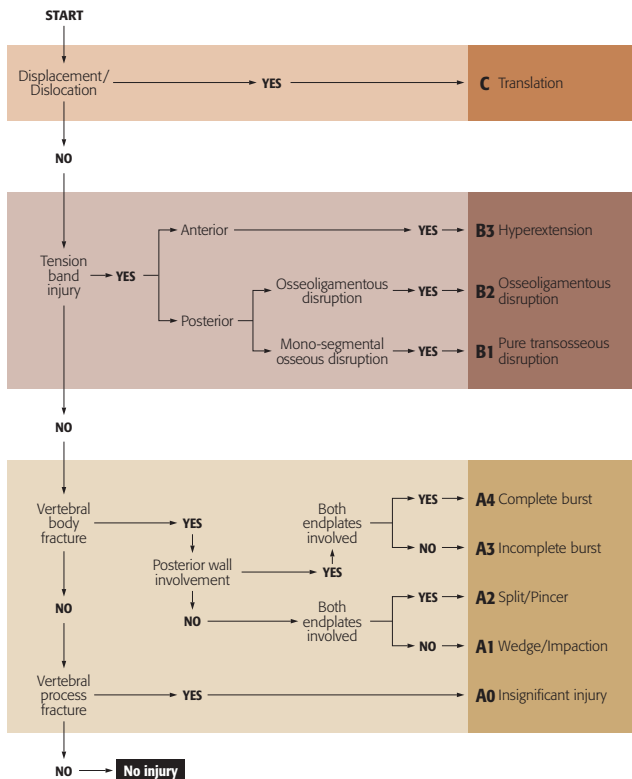


AOSpine Thoracolumbar Classification System

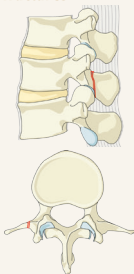
Algorithm for Morphologic Classification



AOSpine Thoracolumbar Classification System

Type A. Compression Injuries

A0. Minor, nonstructural fractures



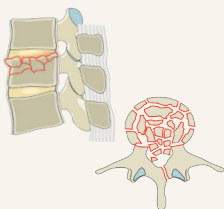
A1. Wedge-compression



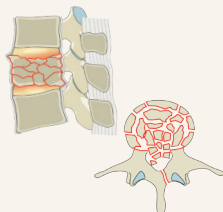
A2. Split



A3. Incomplete burst



A4. Complete burst

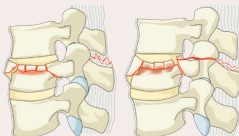


Type B. Distraction Injuries

B1. Transosseous tension band disruption / Chance fracture



B2. Posterior tension band disruption



B3. Hyperextension



Type C. Translation Injuries

C. Displacement / Dislocation

