

AOSpine Upper Cervical Classification System

I. Occipital Condyle and Craniocervical Junction

Type A. Isolated bony injury (condyle)



Type B. Non-displaced ligamentous injury (craniocervical)

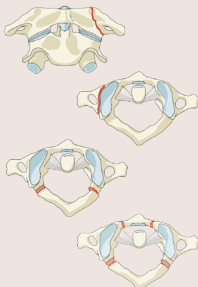


Type C. Any injury with displacement on spinal imaging

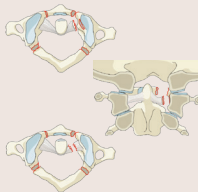


II. C1 Ring and C1-2 Joint

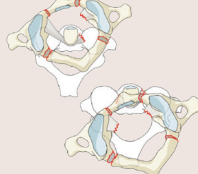
Type A. Isolated bony only (arch)



Type B. Ligamentous injury (transverse atlantal ligament)

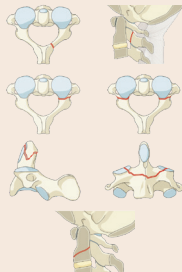


Type C. Atlantoaxial instability / Translation in any plane

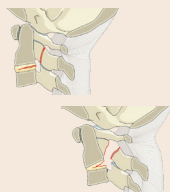


III. C2 and C2-3 Joint

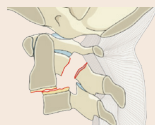
Type A. Bony injury only without ligamentous, tension band, discal injury



Type B. Tension band / Ligamentous injury with or without bony injury



Type C. Any injury that leads to vertebral body translation in any directional plane



AOSpine Upper Cervical Classification System

Upper Cervical Spine Fractures Overview

I. Occipital condyle and occipital cervical joint complex injuries

II. C1 ring and C1-2 joint complex injuries

III. C2 and C2-3 joint complex injuries

Type A.

Bony injury only

- Without significant ligamentous, tension band, discal injury
- Stable injuries

Type B.

Tension band/ligamentous injury

- With or without bony injury
- No complete separation of anatomic integrity
- Stable or unstable depending on injury specifics

Type C.

Translation injury

- Any injury with significant translation in any directional plane and separation of anatomic integrity
- Unstable injuries

Neurology

Type	Neurological
N0	Neurologically intact
N1	Transient neurologic deficit
N2	Radiculopathy
N3	Incomplete Spinal cord injury
N4	Complete spinal cord injury
NX	Unexaminable patient
+	Continued spinal cord compression

Modifiers

Type	Description
M1	Injuries at High Risk of Non-Union with Nonoperative Tx
M2	Injury with significant potential for instability
M3	Patient Specific Factors Affecting Tx
M4	Vascular Injury or Abnormality Affecting Tx

Classification nomenclature

Atlanto-occipital dissociation with a complete spinal cord injury.

Primary injury

→ **OC Type C, N4**

Neurologic status and modifiers