

# AOSpine Subaxial Classification System

## Type A. Compression Injuries

**A0.** Minor, nonstructural fractures



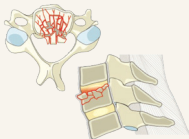
**A1.** Wedge-compression



**A2.** Split



**A3.** Incomplete burst

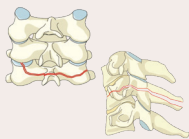


**A4.** Complete burst

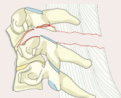


## Type B. Tension Band Injuries

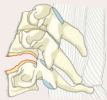
**B1.** Posterior tension band injury (bony)



**B2.** Posterior tension band injury (bony capsulo-ligamentous, ligamentous)



**B3.** Anterior tension band injury



## BL. Bilateral Injuries

**BL.** Bilateral injury



## Type C. Translation Injuries

**C.** Translational injury in any axis-displacement or translation of one vertebral body relative to another in any direction



## Type F. Facet Injuries

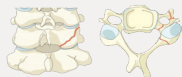
**F1.** Nondisplaced facet fracture



**F2.** Facet fracture with potential for instability



**F3.** Floating lateral mass



**F4.** Pathologic subluxation or perched/dislocated facet



# AOSpine Subaxial Classification System

## Algorithm for Morphologic Classification

