

## Type A Compression Injuries

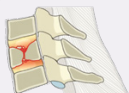
**A0** Minor, nonstructural fractures



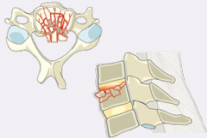
**A1** Wedge-compression



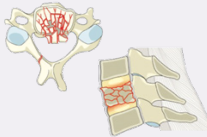
**A2** Split



**A3** Displaced transverse fractures below the S-1 joint

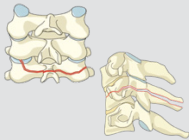


**A4** Complete burst

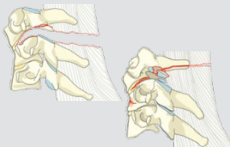


## Type B Tension Band Injuries

**B1** Central Fracture— involves spinal canal



**B2** Transalar Fracture— does not involve foramina or spinal canal



**B3** Transforaminal Fracture— involves foramina but not spinal canal



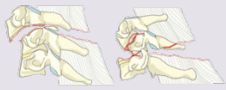
## BL Bilateral Injuries

**BL** Bilateral injury



## Type C Translation Injuries

**C** Translational injury in any axis-displacement or translation of one vertebral body relative to another in any direction



## Type F Facet Injuries

**F1** Nondisplaced facet fracture



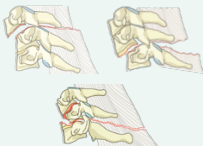
**F2** Facet fracture with potential for instability

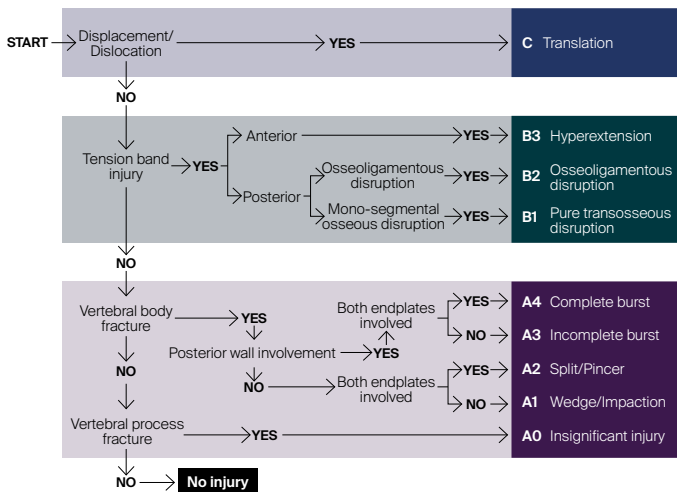


**F3** Floating lateral mass



**F4** Pathologic subluxation or perched/dislocated facet





## Neurology

Type	Neurological
N0	Neurology intact
N1	Transient neurologic deficit
N2	Radicular symptoms
N3	Incomplete spinal cord injury or any degree of cauda equina injury
N4	Complete spinal cord injury
NX	Cannot be examined
+	Continued spinal cord compression

## Modifiers

Type	Description
M1	Posterior Capsuloligamentous Complex injury without complete disruption.
M2	Critical disk herniation.
M3	Stiffening/metabolic bone disease (ie DISH, AS, OPLL, OLF).
M4	Vertebral artery abnormality.